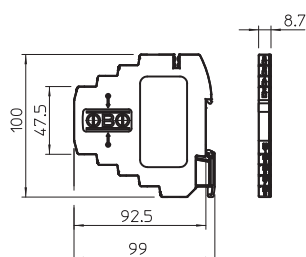


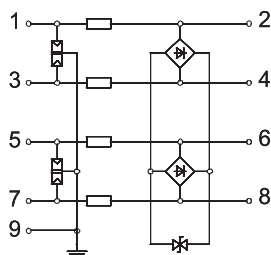
## Series protection device, 4-pole, 24 V version, Ex-tested



### Dimensions



### Connection options



MDP-4 D...-EX : Lightning barrier for intrinsically safe measuring circuits

- Protection device for multi-wire systems
- Direct shield earthing and screwless connection terminals
- Space-saving width of just 8.7 mm
- High frequency range of 0-100 MHz
- ATEX-tested: II 2(1)G Ex ia [ia Ga] IIC T4 Gb (BVS 11 ATEX E 131 X)
- UL-listed (4UM2)

Application: Universal use on 35 mm hat profile rail in any standard distribution housing.

Type	Highest continuous voltage AC V	Highest continuous voltage DC V	Number of poles	Pack. pcs	Weight kg/100 pcs.	Item No.
MDP-4 D-24-EX	20	28	4	1	5,800	5098432

### MDP-4 D-24-EX

Maximum continuous voltage AC V	U <sub>c</sub>	20
Maximum continuous voltage DC V	U <sub>c</sub>	28
Category	Type	1+2+3 / D1+C2+C1
Lightning protection zone LPZ		0-3
Number of poles		4
Rated current A	I <sub>n</sub>	0,58
Series resistance per wire		2,35 Ω ± 5 %
Impulse durability wire-wire	C1:	0,5 kV / 0,25 kA (8/20μs)
Impulse durability wire-earth	C2:	5 kV / 2,5 kA (8/20μs)
Total discharge current (8/20) kA		10
Total discharge current (10/350) kA	D1:	2
Protection level wire-wire V		< 55
Protection level wire-earth V		< 800
Frequency range		0-100 MHz
Temperature range °C	θ	-40-80
Installation type		DIN rail
Connection system		Terminal
Protection rating		IP20
Shielding connection available		Yes
Shield connection		Direct
Connection cross-section, flexible mm <sup>2</sup>		0,14-2,5
Connection cross-section, multi-wire mm <sup>2</sup>		0,14-1,5
Connection cross-section rigid mm <sup>2</sup>		0,14-2,5
Earthing via:		DIN rail
EX approval		II 2(1)G Ex ia [ia Ga] IIC T4 Gb
Testing standard		IEC 61643-21